

2018-2019

CATALOG

# CUSTOM CRAFTWORKS™

A Brand Of Pivotal Health Solutions

800.627.2387  
CustomCraftworks.com



Classic Series  
Hands Free  
Deluxe Table

JOIN &  
SAVE



with additional member discounts!



## What's inside...

Best Selling  
**MASSAGE TABLE  
KITS**



Starting at  
**\$314**

**NEW** Challenger Business Basics Kit - pg. 4

Page **4** . . . . . Aluminum Portable Table

Page **21** . . . . . Foam Roller & other Self Care tools

Page **22** . . . . . Signature Spa Series



Cremé De La  
Cremé Massage  
pg. 19

# Need a Solution? We have the answer.

## Best Selling Portable Tables Starting at \$239

Our **Solutions Series** Portable massage tables and chairs are in stock and ready to ship. These beautifully crafted and rigorously tested tables each have been designed to provide for the practitioners' needs and maximum client comfort.



## HERITAGE Table Solutions Series

The Heritage table offers rounded corners, dual knobs, a strong and flat working surface, and Reiki end panels on each end, increasing your mobility all around the table. With the Shiatsu release cables, this table can easily lay flat on the floor. This feature-filled table is an unbelievable value.

### Table Includes:

Classic Adjustable Face Rest and Cushion, Front Arm Sling and Carry Case

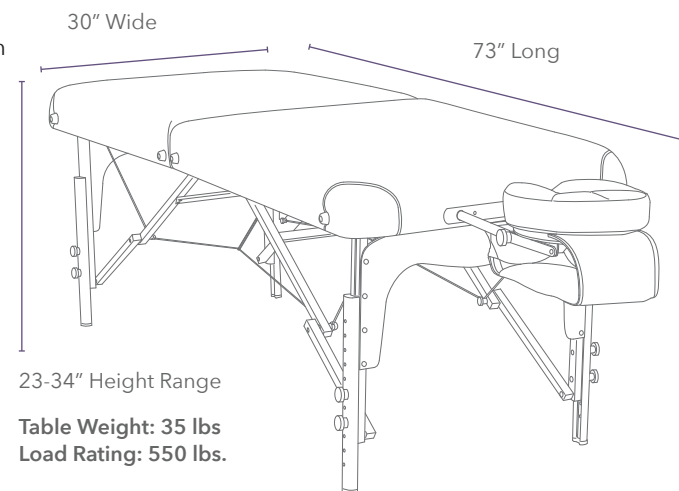
### Table Specifications:

- Load Rating: 550 lbs
- Width: 30"
- Table Weight: 35 lbs
- 8" on center Face Rest Ports
- Length: 73"
- Height Range: 23" - 34"

### Table Features:

- 3" thick multi-layered foam system
- Shiatsu Release Cables
- Reiki End Panels
- Dual End Face Rest Ports
- Dual Knobs
- Solid Beech Wood Frame
- Rounded Corners

## BEST SELLER!



### SOLUTIONS SERIES UPHOLSTERY CHOICES







Providing the ultimate in  
quality **without compromise.**



Add a Bolster  
for just \$29

See page 16

800.627.2387

## SIMPLICITY Table *Solutions Series*

The Simplicity table is a great starter table for students, new graduates or those on a tight budget. Now with improved Reiki end panels, this table has many of the same great features as our more expensive tables.

**Table Includes:** Classic Adjustable Face Rest and Cushion, Front Arm Sling and Carry Case

### Table Specifications:

- Load Rating: 550 lbs
- Length: 73"
- Table Weight: 34 lbs
- Width: 30"
- Height Range: 24" - 34"
- 8" on center Face Rest Ports

### Table Features:

- 2" thick multi-layered foam system
- Shiatsu Release Cables
- Reiki End Panels
- Dual End Face Rest Ports
- Solid Beech Wood Frame

SOLUTIONS SERIES UPHOLSTERY CHOICES



**\$239**  
19300

## DESTINY Lift Back Table *Solutions Series*

The Destiny table is a multi-purpose portable table that allows you to expand your menu to include all forms of traditional massage, reflexology, facials and waxing. The manual lift back mechanism easily adjusts to 10 different positions.

**Table Includes:** Classic Adjustable Face Rest and Cushion, Front Arm Sling and Carry Case

### Table Specifications:

- Load Rating: 550 lbs
- Length: 73"
- Table Weight: 43 lbs
- Width: 30"
- Height Range: 23" - 32"
- 8" on center Face Rest Ports

### Table Features:

- 2.5" thick multi-layered foam system
- Reiki End Panels
- Dual End Face Rest Ports
- Rounded Corners
- Solid Beech Wood Frame
- 10-Position Elevating Lift Back

SOLUTIONS SERIES  
UPHOLSTERY CHOICES



**\$319**  
19302

## LUXOR Table *Solutions Series*

You asked for a comfortable, luxurious and feature-rich table at an affordable price and we listened! You no longer have to sacrifice all the premium features found on much more expensive tables to stay within your budget.



### Premium Foam System

The Luxor table features a 3" thick multi-layered foam system including 3/4" of memory foam.



**Table Includes:** Classic Adjustable Face Rest Base and Deluxe Face Rest Cushion, Folding Contoured Front Arm Rest Shelf and Carry Case

### Table Specifications:

- Load Rating: 550 lbs
- Length: 73"
- Table Weight: 35 lbs
- Width: 30"
- Height Range: 24" - 34"
- 8" on center Face Rest Ports

### Table Features:

- 3" thick multi-layered foam system with 3/4" of memory foam
- Shiatsu Release Cables
- Dual End Face Rest Ports
- Rounded Corners
- Reiki End Panels
- Dual Knobs
- Solid Beech Wood Frame

SOLUTIONS SERIES UPHOLSTERY CHOICES



**\$379**  
19359

## CHALLENGER

### Aluminum Massage Table

#### Solutions Series

**\$399**  
I9391

## NEW

### CHALLENGER

### TABLE KITS



#### Table Includes:

Face Rest with Cushion  
and Black Carry Case

#### Table Specifications:

- Load Rating: 600 lbs.
- Width: 30"
- Length: 73"
- Height Range: 24" - 33"
- Table Weight: 30 lbs.
- 8" on center Face Rest Ports

#### Table Features:

- 3" thick multi-layered foam system
- Reiki Access Ends
- Dual End Face Rest Ports
- Rounded Corners
- Auto-hold Hinge System
- Aluminum Frame

**NEW**  
Colors  
Available!

This table offers an aluminum frame with finger-joint craftsmanship and auto-hold hinge system.

#### SOLUTIONS SERIES UPHOLSTERY CHOICES



*Rugged yet lightweight and functional.*

## PRACTICE

## ESSENTIALS Kit

#### Includes:

- Challenger Aluminum Massage Table
- Carry case
- Round bolster
- Classic adjustable face rest with cushion
- Single oil holster
- 8 oz. Sacred Earth Botanicals massage lotion
- Three-piece premium 100% cotton sheet set (flat, fitted and face rest cover)
- Pack of three premium 100% cotton flannel face rest covers

**\$474**

~~\$487~~ PEK CHA

## BUSINESS BASICS Kit

#### Includes:

- Challenger Aluminum Massage Table
- Classic adjustable face rest with cushion
- Melody Massage Chair with carry case
- 8 oz. Sacred Earth Botanicals massage lotion
- 25 Disposable fitted face rest covers (white spunbound fabric)
- Carry case
- Wooden folding stool
- Round bolster
- Single oil holster



**\$646**

~~\$728~~ BBK CHA

[www.CustomCraftworks.com](http://www.CustomCraftworks.com)



# Massage Table Kits



HERITAGE KIT shown

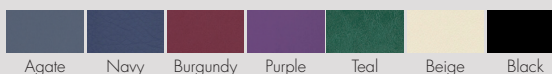
## PRACTICE ESSENTIALS KITS

Building your practice has never been so affordable.

The Practice Essentials Kits combine our most popular items, including one of our high-quality Solutions Series tables, front arm sling, carry case, classic adjustable face rest with cushion, round bolster, oil holster, 8 oz. Sacred Earth Botanicals massage lotion, three-piece sheet set (flat, fitted and face rest cover), 3-pack cotton flannel face rest cover (white), and our exclusive under-table shelf for storage.

- Custom Craftworks Solutions  
Simplicity Table Kit PEK SIM . . . . . ~~\$343~~ **\$314**
- Custom Craftworks Solutions  
Heritage Table Kit (shown) PEK HER . . . ~~\$403~~ **\$374**
- Custom Craftworks Solutions  
Destiny Lift Back Table Kit PEK DES . . . ~~\$423~~ **\$394**
- Custom Craftworks Solutions  
Luxor Table Kit PEK LUX. . . . . ~~\$483~~ **\$454**

### SOLUTIONS SERIES UPHOLSTERY CHOICES



## BUSINESS BASICS KITS

For therapists utilizing both table and chair techniques.

Start your business with the basics. Our Business Basics Kits combine our affordable and feature-rich portable tables with a massage chair and other add-ons. The Business Basics Kits include one of our high quality Solutions Series tables with carry case, front arm sling, classic adjustable face rest, a Melody Massage Chair with carry case, wooden folding stool, round bolster, oil/lotion holster with an 8 oz. bottle of Sacred Earth Botanicals massage lotion and 25 disposable fitted face rest covers (white spunbound fabric).



HERITAGE KIT shown

- Custom Craftworks Solutions  
Simplicity Table Kit BBK SIM . . . . . ~~\$568~~ **\$486**
- Custom Craftworks Solutions  
Heritage Table Kit (shown)  
BBK HER . . . . . ~~\$628~~ **\$546**
- Custom Craftworks Solutions  
Destiny Table Kit BBK DES . . . . . ~~\$648~~ **\$566**
- Custom Craftworks Solutions  
Luxor Table Kit BBK LUX . . . . . ~~\$708~~ **\$626**

Starting at  
**\$314**

Starting at  
**\$486**



**ONLY 18 LBS.**

**Chair Specifications:**

- Load Rating: 300 lbs
- 50"L x 17.5"W x 44.5"H
- Chair Weight: 18 lbs
- CE certified

**Chair Features:**

- 2" thick fire retardant foam system
- Adjustable Headrest
- Seat Height and Angle Adjustments
- Constructed and welded to provide a solid, rigid structure that doesn't flex

## MELODY Massage Chair Solutions Series

The Melody Massage Chair is ergonomically designed to offer maximum comfort to both client and practitioner. It sets up in seconds and folds for easy transport and storage. The flexibility of arm height and angle adjustments, an adjustable chest pad, removable sternum pad, adjustable headrest and seat height and angle adjustments help match your working height and fit your client perfectly.

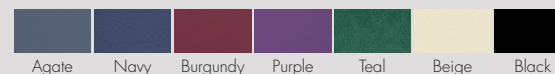
### Melody Includes:

Carry Case with Strap, Adjustable Chest Pad, Removable Sternum Pad, Eyeglass/Jewelry Pouch.

**\$229**  
I9309



**SOLUTIONS SERIES UPHOLSTERY CHOICES**



## SIDEKICK Desktop Unit Solutions Series

Easily adjusts to support any body size and shape. Prone or seated, the adjustable chest pad provides the best client support and comfort. Includes carry case.

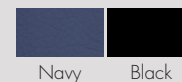
### Sidekick Includes:

Carry Case with Strap, Adjustable Chest Pad and Adjustable Face Rest

**Chair Specifications:**

- Load Rating: 300 lbs
- Chair Weight: 7 lbs
- 2" thick fire retardant foam system

**SOLUTIONS SERIES  
UPHOLSTERY CHOICES**



**\$99**  
I9312





# CLASSIC SERIES

For stable efficiency and long-life comfort

**CUSTOM CRAFTWORKS**  
A Brand Of Pivotal Health Solutions

**EXPECT MORE**  
from Classic Series  
**Portable Tables!**

## ATHENA Table *Classic Series*

The Athena Massage Table has been the top seller in our line for over two decades. Once you experience this amazing table, you'll know why! The Athena features premium materials and unmatched craftsmanship. Built using only the finest components, such as Eastern Hard Rock Maple, American Poplar, Birch and aircraft-quality cables, the Athena was specifically designed to retain movement so that you feel fresher at the end of the day and your clients receive the massage that you intended. Customize the Athena by adding our Prenatal Option or Breast Recesses, and both you and your clients will experience the advantages of these unique features.

**Athena shown in burgundy.**  
**Face rest and carry case sold separately.**

### Table Specifications:

- Load Rating: 650 lbs
- Table Weight: 34 lbs
- Width: 28", 30"
- Height Range: 25" - 35"
- Length: 73"
- 9" on center Face Rest Ports

### Table Features:

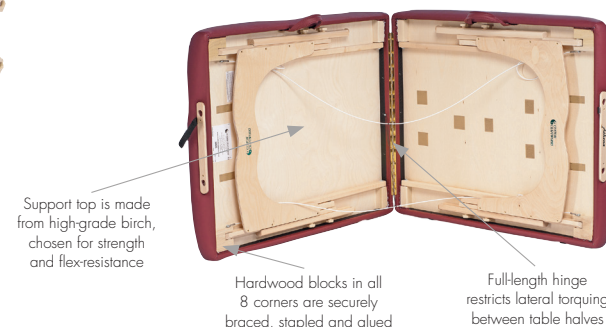
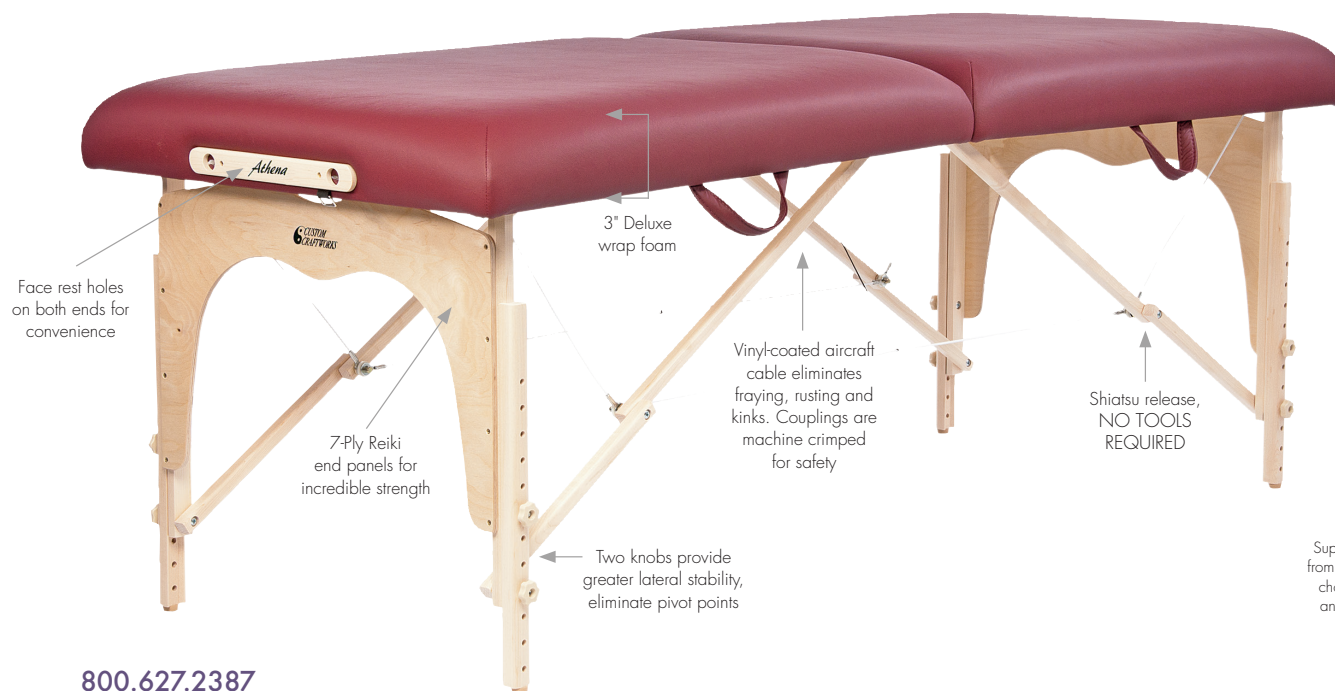
- Shiatsu Release Cables
- Reiki end panels on both ends

### Table Upgrades:

- Upholstery & Foam - includes our exclusive combination of luxurious Natural Touch Urethane upholstery and three full inches of our four-layer Touch Response Memory Foam System
- Breast/Scapula Recesses - dual cutouts (includes custom plugs)
- Prenatal - includes Breast Recesses and belly cutout with adjustable sling to provide comfort and support to expectant mothers of any size (includes custom plugs)
- Custom Width: 33" or 36"
- Custom Length: 78"
- Low Height Range: 18" - 26"
- Rounded Corners
- Side Arm Holes - for use with side arm extensions
- Crescent Face Hole - Includes custom plug

**\$549**  
AT

**NEW**  
Colors  
Available!



800.627.2387

# CLASSIC SERIES

For stable efficiency and long-life comfort

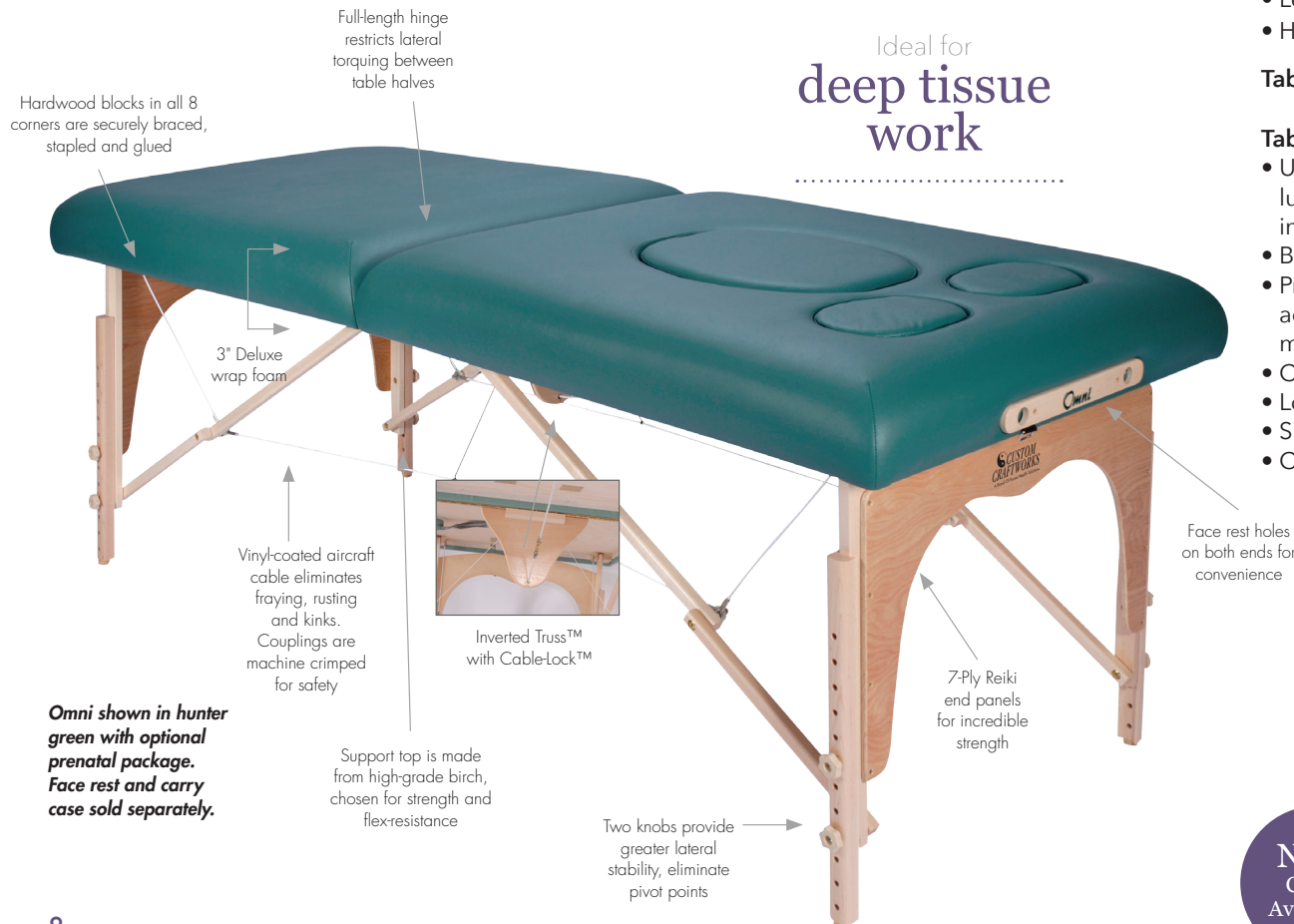
## Classic Series Improvements in 2018:

- NEW Upholstery Colors Available (see bottom of page)
- 3" Comfort Wrap Foam System

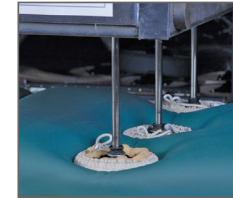
### OMNI Table *Classic Series*

The best portable massage table for deep tissue bodywork and sports massage.

The Omni is in a class by itself. Superior construction utilizing extra-rigid birch makes this table able to withstand the most rigorous work. Tested to 800 pounds, the Omni combines two of the most technologically advanced systems in massage table history: the Cable-Lock™ system gives you extraordinary strength and easy setup, and the Inverted Truss™ provides extra support in the middle of the table.



**Tested to  
800  
pounds!**



**\$649**  
OM

#### Table Specifications:

- Load Rating: 800 lbs
- Length: 73"
- Height Range: 25" - 35"
- Width: 28", 30"
- Table Weight: 37 lbs
- 9" on center Face Rest Ports

**Table Features:** • Reiki end panels on both ends

#### Table Upgrades:

- Upholstery & Foam – includes our exclusive combination of luxurious Natural Touch Urethane upholstery and three full inches of our four-layer Touch Response Memory Foam System
- Breast/Scapula Recesses – dual cutouts (includes custom plugs)
- Prenatal – includes Breast Recesses and belly cutout with adjustable sling to provide comfort and support to expectant mothers of any size (includes custom plugs)
- Custom Width: 33" or 36"
- Custom Length: 78"
- Low Height Range: 18" - 26"
- Rounded Corners
- Side Arm Holes – for use with side arm extensions
- Crescent Face Hole – Includes custom plug

#### CUSTOM CRAFTWORKS UPHOLSTERY CHOICES



#### UPHOLSTERY UPGRADE NATURAL TOUCH CHOICES



**NEW  
Colors  
Available!**

[www.CustomCraftworks.com](http://www.CustomCraftworks.com)



## TABLE Packages *Classic Series*

We're offering two package levels that combine the Athena or Omni with an array of carefully selected accessories.



### ATHENA ESSENTIAL Package

**Includes:**

- Classic Series Athena Table
- 9" Dual action face rest with pillow
- Deluxe 3-pocket carry case



### OMNI ESSENTIAL Package

**Includes:**

- Classic Series Omni Table
- 9" Dual action face rest with pillow
- Deluxe 3-pocket carry case



### ATHENA PROFESSIONAL Package

**Includes:**

- Classic Series Athena Table
- 9" Dual action face rest with pillow
- Classic Series round ankle/knee bolster
- Classic Series arm rest shelf
- Under-table shelf
- Classic Series rolling stool
- Deluxe 3-pocket carry case

800.627.2387



### OMNI PROFESSIONAL Package

**Includes:**

- Classic Series Omni Table
- 9" Dual action face rest with pillow
- Classic Series round ankle/knee bolster
- Classic Series arm rest shelf
- Under-table shelf
- Classic Series rolling stool
- Deluxe 3-pocket carry case

## MUST HAVES

Our exclusive Breast Recesses and Prenatal options profoundly increase comfort and enhance the offerings of your practice.

### 2 FREE Fitted Breast Recesses Sheets

with purchase of Breast Recesses Option - ONLY WHILE SUPPLIES LAST!



### BREAST RECESSES OPTION

Breast/Scapula Recesses, dual cutouts with central sternum/spine support (includes custom plugs)

**\$123**

CLOSE-OUT Fitted Breast Recesses Sheets (fits tables up to 30"x73")

**\$7**



### PRENATAL OPTION

Breast Recesses and belly cutout with adjustable sling to provide comfort and support to expectant mothers of any size (includes custom plugs)

**\$319**

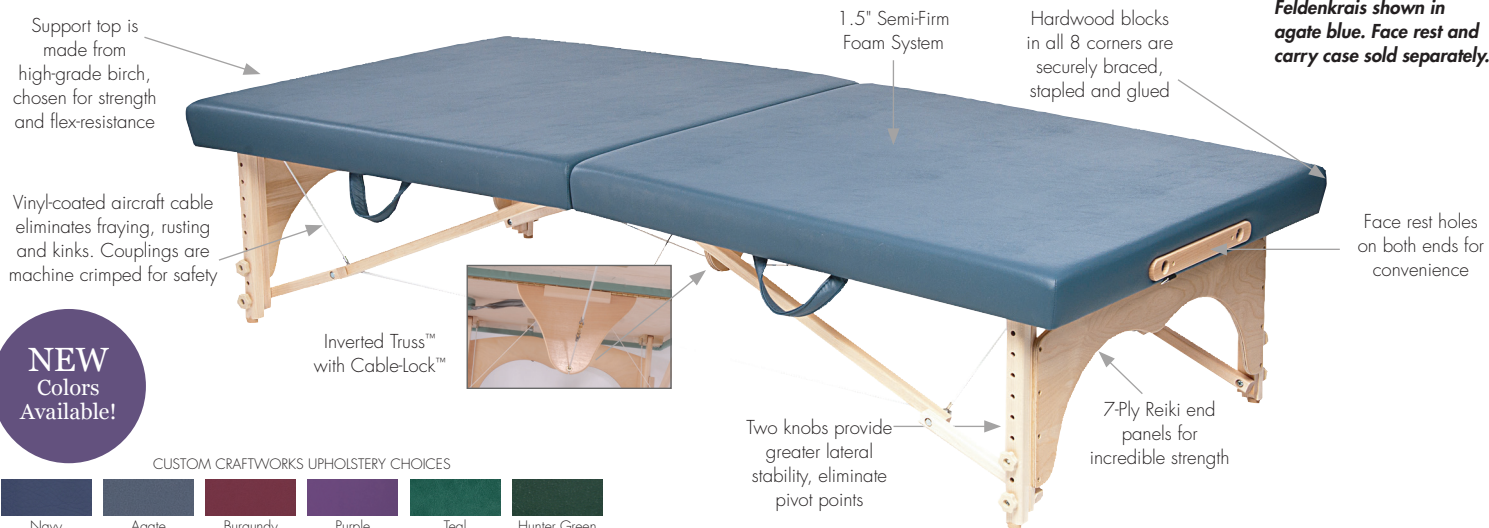
# CLASSIC SERIES

For stable efficiency and long-life comfort

**CUSTOM CRAFTWORKS**  
A Brand Of Pivotal Health Solutions

**EXPECT MORE**  
from Classic Series  
**Portable Tables!**

## FELDENKRAIS Table *Classic Series*



The Feldenkrais method demands an ultra-strong and stable surface for practitioners – and the Feldenkrais Portable Massage Table delivers. Designed, tested and proven by leading Feldenkrais trainers, its special features include a firm 1.5 inch foam system, Inverted Truss™ system with Cable-Lock™ (for tremendous lateral stability combined with snap-open ease of use), and standard low-height range (17 to 25 inches). Our exclusive design is one of the industry's best-selling specialty tables and easily withstands the rigors and movements unique to the Feldenkrais method. Carry case and other accessories sold separately.

### Table Specifications:

- Load Rating: 800 lbs
- Width: 30"
- Length: 73", 78"
- Height Range: 17" - 25"
- Table Weight: 41 lbs
- 9" on center Face Rest Ports

### Table Features:

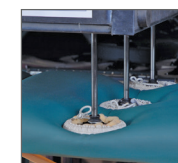
- 1.5" semi-firm foam system
- Dual end face rest ports

### Table Upgrades:

- Wildman Rebond Firm Foam System
- Custom Width: 33" or 36"
- Natural Touch Urethane Upholstery

**\$799**

FK3003-73 HO



**Tested to 800 pounds!**

### Table Specifications:

- Load Rating: 800 lbs
- Width: 30"
- Length: 73", 78"
- Height Range: 24" - 34"
- Table Weight: 41 lbs
- 9" on center Face Rest Ports

### Table Features:

- 1.5" semi-firm foam system
- Dual end face rest ports

[www.CustomCraftworks.com](http://www.CustomCraftworks.com)

**\$799**

FK3003-73

## ALEXANDER Table *Classic Series*

Ideal for table work, the firm, flat surface of this table is ideal for use during Alexander lessons. Larger width and length options allow the student to feel confident on the table, while the 24"-34" height range makes for a more comfortable stance for the teacher. The design complements most decor and comes in a variety of on trend colors. The table folds in half for compact storage. Tested to 800 pounds, our superior construction features extra-rigid birch for strength and flex-resistance. Our combination Inverted Truss™ and Cable-Lock™ systems give you additional stability and support at all points. Carry case and other accessories sold separately.





Hands Free Basic shown in Stainless Steel Gray with rounded corners



STARTING AT  
**\$2,139**  
Thera-P

## HANDS FREE Basic

### Table Includes:

- Dual action face rest and cushion

Hands Free Lift Back shown in Stainless Steel Gray with rounded corners



STARTING AT  
**\$2,439**  
TThera-P

## HANDS FREE Lift Back

### Table Includes:

- Dual action face rest and cushion
- Side arm holes - head end (swivel side arm supports not included)

Hands Free Deluxe shown in Stainless Steel Gray



STARTING AT  
**\$2,859**  
SThera-P

## HANDS FREE Deluxe

### Table Includes:

- Dual action face rest base
- Salon head support and neck pillow
- Side arm holes - head end
- Swivel side arm supports
- Rounded corners

800.627.2387

# HANDS FREE Electric Lift Tables *Classic Series*

Allows manual therapists to move freely around the surface of the table without losing contact with their client. No more tripping or rolling over foot pedals and wires; no more reaching and stretching to reach the pedal.

This amazing feature is a must for small spaces. The easy-to-operate caster system makes it a breeze to move around the office when needed.



Controlling the height of your table has never been easier!



VIEW OUR ONLINE VIDEO  
[www.customcraftworks.com](http://www.customcraftworks.com)

#### CUSTOM CRAFTWORKS UPHOLSTERY CHOICES

Navy	Agate	Burgundy	Purple	Teal	Hunter Green
Mushroom	Buff	Chocolate	Black		

#### UPHOLSTERY UPGRADE NATURAL TOUCH CHOICES

Amethyst	Sapphire	Jade	Ivory	Ebony	Stainless Steel Gray
Morning Dew	Sand Dune	White Tie	Latte		



Table is ADA compliant  
(Consult your tax professional about eligibility for a Section 44 ADA Tax Credit)

**NEW**  
Colors  
Available!

#### Hands Free Table Specifications:

- Load Rating: 400 lbs
- Width: 30"
- Length: 73"
- Height Range: 17" - 35"
- Standard Upholstery
- 9" on center Face Rest Ports

#### Hands Free Table Features:

- Hands Free Foot Bar Controls on both sides
- Table is ADA compliant (Consult your tax professional about eligibility for a Section 44 ADA Tax Credit)
- Durable and stylish design featuring precision cut flat and tube steel
- Whisper quiet lift system
- Easy-to-operate caster system, supports table functionality and movement
- 3" thick deluxe wrap foam system

#### Hands Free Table Upgrades:

- Upholstery & Foam – includes our exclusive combination of luxurious Natural Touch Urethane upholstery and 3 full inches of our four-layer Touch Response Memory Foam System
- 650 lb. Lift Capacity Motor
- Breast/Scapula Recesses – dual cutouts with central sternum/spine support (includes custom plugs)
- Rounded Corners
- Custom Width: 33"
- Side Arm Holes – for use with side arm extensions (included on Lift Back and Deluxe)

# PRO ELECTRIC Tables *Classic Series*



Basic Pro shown in agate, with optional prenatal upgrade

STARTING AT  
**\$1,449**  
ELPRO



Lift Back Pro shown in agate

STARTING AT  
**\$1,649**  
TELPRO



Deluxe Pro shown in buff

STARTING AT  
**\$2,149**  
SELPRO

## BASIC Pro

Our Basic model has a classic design with face rest holes on both ends of the table for added convenience.

### Table Includes:

- Dual action face rest and cushion

## LIFT BACK Pro

Our Lift Back model adds the convenience of a multi-position manual lift back.

### Table Includes:

- Dual action face rest and cushion
- Side arm holes - head end (swivel side arm supports not included)

## DELUXE Pro

Our Deluxe model provides countless position options, thanks to easy-to-adjust manual back and knee elevations. **(Crescent pillow not included)**

### Table Includes:

- Dual action face rest base
- Salon head support and neck pillow
- Side arm holes - head end
- Swivel side arm supports
- Rounded Corners



### Table Specifications:

- Load Rating: 550 lbs
- Height Range: 18" - 34"
- Length: 73"
- Width: 28" or 30"
- Standard Upholstery
- 9" on center Face Rest Ports

### Table Features:

- 9" dual-action face rest and pillow
- 3" thick foam system
- Single foot pedal

### Upgrades:

- Width: 33"

Luxury for  
**less!**



Includes adjustable face rest base and pillow



Table is ADA compliant  
(Consult your tax professional about eligibility for a Section 44 ADA Tax Credit)

# MUST HAVES

Our exclusive Breast Recesses and Prenatal options profoundly increase comfort and enhance the offerings of your practice.

## BREAST RECESSES

Breast Recesses option includes custom breast recesses plugs

**\$123**

## PRENATAL

Prenatal option includes breast recesses, belly hole, custom belly hole plug and sling

**\$319**



**2 FREE**  
Fitted Breast Recesses  
Sheets

with purchase of Breast Recesses Option - while supplies last!

Fits tables up to 30"x73"



# ELEGANCE ELECTRIC Tables *Classic Series*

## BASIC Elegance

We combined stability with style with our Elegance Basic Electric Massage Table. It lifts with ease using a standard single foot pedal.

### Table Includes:

- Dual action face rest and cushion

### Table Specifications:

- Load Rating: 550 lbs
- Height Range: 18" - 34"
- Standard Upholstery
- Width: 28" or 30"
- 9" on center Face Rest Ports

## LIFT BACK Elegance

The comfort and convenience of our Elegance Lift Back Electric Massage Table is rich with standard features, including a powerful motor that raises up to 550 lbs.

### Table Includes:

- Dual action face rest and cushion
- Side arm holes - head end (swivel side arm supports not included)

### Table Features:

- 9" dual action face rest and pillow
- 3" thick foam system
- Single foot pedal

### Upgrades:

- Width: 33"

## DELUXE Elegance

Ensure your greatest versatility with the Elegance Deluxe Electric Massage Table. It performs with style, including a quick yet quiet motor, manual lift back and knee positions.

**(Crescent pillow not included)**

### Table Includes:

- Dual action face rest base
- Salon head support and neck pillow
- Side arm holes - head end
- Swivel side arm supports
- Rounded corners

**NEW**  
Colors  
Available!

See our website  
for a complete  
listing of table  
upgrades  
available.



Elegance Basic shown in sapphire, with optional Breast Recesses upgrade

STARTING AT  
**\$1,819**  
EL



Elegance Lift Back shown in buff with optional swivel side arms and salon head support

STARTING AT  
**\$2,169**  
TEL



Elegance Deluxe shown in teal

STARTING AT  
**\$2,579**  
AZ

This stylish table features  
wood feet and a  
**modern curve  
base**

### CUSTOM CRAFTWORKS UPHOLSTERY CHOICES



### UPHOLSTERY UPGRADE NATURAL TOUCH CHOICES



Table is ADA compliant  
(Consult your tax  
professional about  
eligibility for a Section 44  
ADA Tax Credit)

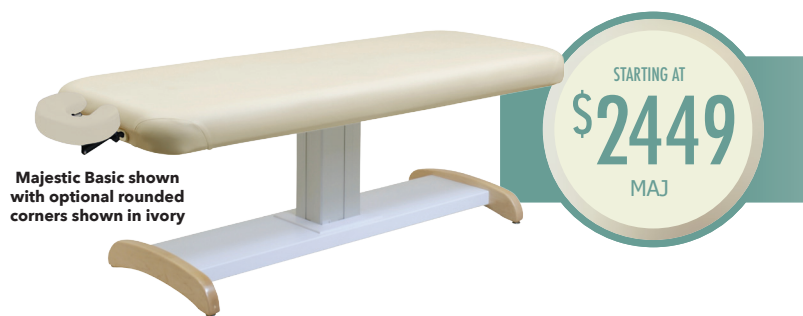


Touch Response  
Foam System  
upgrade available



Power Tilt Back  
upgrade available on  
Lift Back & Deluxe

# MAJESTIC ELECTRIC Tables *Classic Series*



Majestic Basic shown with optional rounded corners shown in ivory

## MAJESTIC Basic

### Table Includes:

- Dual action face rest and cushion

## MAJESTIC Lift Back

### Table Includes:

- Dual action face rest and cushion
- Side arm holes - head end (swivel side arm supports not included)

## MAJESTIC Deluxe (Crescent pillow not included)

### Table Includes:

- Dual action face rest base
- Salon head support and neck pillow
- Side arm holes - head end
- Swivel side arm supports
- Rounded Corners



Majestic Lift Back shown with optional side arms and salon head support shown in ivory

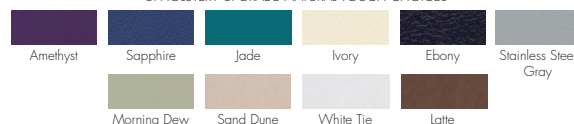


Majestic Deluxe shown in burgundy

#### CUSTOM CRAFTWORKS UPHOLSTERY CHOICES



#### UPHOLSTERY UPGRADE NATURAL TOUCH CHOICES



### Table Specifications:

- 600 lb Load Rating
- Height Range: 27.5" - 39.5"
- Width: 28", 30"
- Length: 73"

### Table Features:

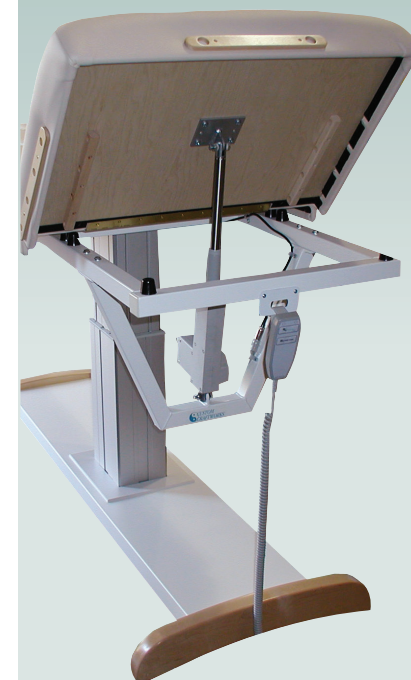
- 9" dual action face rest and pillow
- Standard Upholstery
- 3" Deluxe Wrap Foam
- Single foot pedal

### Upgrades:

- Natural Touch upholstery and 3" of our four-layer Touch Response Memory Foam System
- Breast/Scapula Recesses – dual cutouts with central sternum/spine support (includes custom plugs)
- Prenatal – includes Breast Recesses and belly cutout with adjustable sling to provide comfort and support to expectant mothers of any size (includes custom plugs) and belly sling (foot end only on lift back and not available on deluxe table)
- Width: 33"
- Length: 78"
- Side Arm Holes
- Rounded Corners (included on Lift Back and Deluxe)
- Power Lift Back

# MUST HAVE

The Power Lift Back upgrade is available on Lift Back and Deluxe models. This option allows you to quietly and securely move your clients between flat and seated positions while they remain on the table! Comes standard with hand control.



## POWER LIFT BACK UPGRADE \$215

# MCKENZIE ELECTRIC Tables *Classic Series*



McKenzie Basic shown  
in navy

STARTING AT  
**\$2449**  
MK

## MCKENZIE Basic

With our greatest height range yet, our McKenzie Basic Electric Massage Table raises smoothly and effortlessly, giving you the most options during treatment.

### Table Includes:

- Dual action face rest and cushion



McKenzie Lift Back  
shown in black

STARTING AT  
**\$2659**  
TMK

## MCKENZIE Lift Back

The flexibility of a manual lift back enhances the incredible height range in our McKenzie Lift Back Electric Massage Table, which raises smoothly and effortlessly.

### Table Includes:

- Dual action face rest and cushion
- Side arm holes - head end (swivel side arm supports not included)



McKenzie Deluxe shown  
in burgundy

STARTING AT  
**\$3079**  
YK

## MCKENZIE Deluxe

The McKenzie Deluxe Electric Massage Table combines our incredible height range with the flexibility of a manual back and knee lift.

**(Crescent pillow not included)**

### Table Includes:

- Dual action face rest base
- Salon head support and neck pillow
- Side arm holes - head end
- Swivel side arm supports
- Rounded corners

### Table Specifications:

- 400 lb Load Rating
- Height Range 19" - 38"
- Width: 28", 30"
- Length: 73"

### Table Features:

- 9" on center Face Rest Ports
- Standard Upholstery
- 3" Deluxe Wrap Foam
- Dual Action Face Rest Base and Pillow
- Single foot pedal

### Table Upgrades:

- Natural Touch upholstery and 3" of our four-layer Touch Response Memory Foam System
- Breast/Scapula Recesses – dual cutouts with central sternum/spine support (includes custom plugs)
- Width: 33"
- Length: 78"
- Side Arm Holes (included on lift back & deluxe)
- Power Lift Back standard with hand control
- Rounded Corners



Table is ADA compliant  
(Consult your tax professional about eligibility for a Section 44 ADA Tax Credit)

**NEW**  
Colors  
Available!

#### CUSTOM CRAFTWORKS UPHOLSTERY CHOICES



#### UPHOLSTERY UPGRADE NATURAL TOUCH CHOICES





# Best Selling ACCESSORIES



Check out our *Solutions Series & Classic Series* **STOOLS** on pg. 18

## TABLE CART *Solutions Series*

**\$67**

Accommodates tables up to 36" wide, yet folds neatly for compact storage. Simple, affordable and functional. The oversized wheels turn on a dime and provide balanced support and clearance.

**19393** Solutions Table Cart (36" x 78" tables)



## MELODY CHAIR CARRY CASE

Protect the smooth surface of your Melody Chair by wrapping it in our Carry Case. Built tough with a reinforced bottom.

**CA-Melody**

**\$59**



**FRC-16W**  
Sani-Covers  
(2 bags of 25 – White)

**\$8.99**



**FRC-50-4221**  
Sani-Covers  
(box of 50 – White)

**\$10.99**



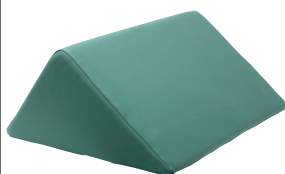
**19315**  
Solutions Round Bolster  
6" x 25"

**\$29**



**19336**  
Solutions Half Round Bolster  
3" x 25"

**\$31**



**19317**  
Solutions  
Triangle Bolster

**\$63**



**BOL H4**  
Classic Series Half  
Round Bolster  
4" x 27"

**\$41**



Classic Series Round Bolsters  
Ankle/Knee Bolster

**BOL Ank 6" x 27" \$36**

**BOL Kn 8" x 27" \$54**



**BOL REF**  
Reflexology Bolster

**\$129**



**19323**  
Solutions Arm Extensions

16

**\$49**



**BOL BSE**  
Classic Series Bolster  
Side Arm Extensions

**\$95**



**SLD**  
Classic Series Sliding  
Side Arm Extensions  
(table must have side arm holes)

**\$109**



10" Classic Series  
Foot Extension

**FEX 28 28" wide \$95**

**FEX 30 30" wide \$95**



**SHS**  
Classic Series Salon Head  
Support Pillow Only (includes  
neck and head pillow)

**\$92**



**19331**  
Solutions Hanging Armrest

**\$30**



**ARST**  
Classic Series Armrest Shelf

**\$62**

Add to your clients' experience and enhance your own toolbox with a variety of massage supplies and accessories.

Visit our website for complete accessories product details.



**CR-Pill**  
Classic Series Crescent Pillow  
**\$42**



**POS**  
Dual Action Adjustable Face Rest w/Pillow (9" on center)  
**\$109**



**DPOS**  
Wooden Deluxe Adjustable Face Rest w/Pillow (9" on center)  
**\$129**



**PPOS**  
Pivot Posi-Tilt Face Rest w/Pillow (9" on center)  
(or w/out pillow – PPOS-B \$117)  
**\$139**



**UTS28-30**  
Under Table Shelf  
(fits 28" or 30" x 73" standard tables)  
**\$16.49**

**UTS33**  
Under Table Shelf  
(fits 33" x 73" standard tables)  
**\$16.99**

*\*Does not fit Challenger Aluminum Table*



**19320**  
Solutions Classic Adjustable Face Rest Base Only (8" on center)  
**\$67**



**POS-B**  
Dual Action Face Rest Base Only (9" on center)  
**\$87**



**DPOS-B**  
Deluxe Adjustable Face Rest Base Only (9" on center)  
**\$107**



**PPOS-B**  
Pivot Posi-Tilt Face Rest Base Only (9" on center)  
**\$117**



**19378**  
(45 piece)  
Hot Stone Set with Cool Stones  
**\$109**



Use for comfortable, face-up positioning for massage, spa or chiropractic treatment



**CEBL-1001**  
Omni Cervical Relief Pillow  
Available in Blue only.  
**\$54.99**



**19356**  
6 Quart Stone Heater (includes wooden spoon)  
**\$99**



**OHD+PB**  
Double Oil/Lotion Holster with 2 BPA-free pump bottles (cream jar not included)  
**\$10.75**



**OHS+PB**  
Single Oil/Lotion Holster with 1 BPA-free pump bottle (available in black or purple)  
**\$8.75**



**CA-30**  
Deluxe 3 Pocket Carry Case (w/padded shoulder strap)  
Fits 28" & 30" x 73" tables  
**\$61**



**CAXWXL**  
(33" & 36" x 78")  
Specialty Carry Case (w/padded shoulder strap) for oversized tables  
**\$82**



Sani-Cover Omni Cervical Relief Pillow Disposable Covers  
**CEC-25** (bag of 100)  
**\$16.98**



# Table LINENS



Spa Theme Sets  
pg. 26

## SHT SET 3pc

Deluxe Double  
Brushed  
Cotton Flannel  
3 Piece  
Sheet Set

**\$27.99**

Available in: Lilac, Sage,  
Light Blue, White, Natural, and Chocolate



## SHT SET P/C 3pc

Premium Blend  
Poly/Cotton  
3 Piece  
Sheet Set

**\$24.99**

Available in: White, Natural, and Chocolate



## FRC 3PK

Deluxe Double  
Brushed Cotton  
Flannel Face  
Rest Covers  
Pack of 3

**\$12.99**

Available in: Lilac, Sage,  
Light Blue, White, Natural,  
and Chocolate



## FRC P/C 3PK

Premium Blend  
Poly/Cotton  
Face Rest Covers -  
Pack of 3

**\$11.99**

Available in: White, Natural and Chocolate



## BCV 6x28

Cotton Flannel 6"x28"  
Round Bolster Cover

**\$8.49**

Available in: White and Natural



## PFB

Premium Polar Fleece  
Blanket

**\$18.99**

Available in: Natural, Forest Green,  
Chocolate, Sage, Lavender and Terracotta



## FP-SET

Fleece Pad Set (28" x 72")

**\$42.99**

**I9395**

Deluxe Electric Warmer Pad (29.5" x 73")

*Close Out*

**\$7**



**FIT-BR** Specialty Flannel Fitted  
Sheet with Breast Recesses cutouts

## STOOLS Solutions Series

Solutions  
Folding Stool

**\$49**  
I9311



Solutions  
Rolling Stool

**\$79**  
I9332



Solutions  
Rolling Stool  
With Back

**\$89**  
I9310



## STOOLS Classic Series

Classic Series  
Rolling Stool

**\$109**  
RS





## What people are saying...

"The only tables I will buy in the future!! I have purchased 3 of the Hands Free models for my practice over the past couple years. The fact that you can raise and lower the table while standing anywhere around it is a big deal when your hands are always on the client. Since I have been using these tables, I have less fatigue, my back pain is gone and my clients comment on how professional they are! I also love it for elderly people getting on and off the table and also those in wheelchairs or with other disabilities. BEST tables you can buy!!"

**Heather Rowell**

"We've been using Custom Craftworks 36" wide tables for almost 20 years because we feature Shiatsu. Our services are fully-clothed so the look of the tables is as important as the durability. CCW's tables are used, washed and reused hundreds of times each week at The Highland Backrub and I'm pleased to say that they definitely hold up under pressure. Our therapists stand, kneel and sit on them with their clients, so I can report that they are sturdy as well as lovely."

**Annette Rondano**

Every signature is unique,  
**and ours is stamped  
on every product.**



Check out the gallery of gorgeous massage clinics that utilize everything from our tables to our stones to our towel warmers.



# SACRED EARTH BOTANICALS®

## OILS, CREAMS & LOTIONS



We are proud to offer only Sacred Earth Botanicals® line of cruelty-free, organic oils, vegan oils, creams and lotions, handcrafted right here in Oregon, USA to suit your technique and budget.

### Vegan Massage Cream

Our cream was formulated to provide great grip for controlled strokes and deep tissue work, yet offer the glide of oil, making it an excellent choice for a full body massage as well. Rich in essential fatty acids and organic botanical extracts for a calming, therapeutic experience for the client. Unscented, hypo-allergenic and vegan, our massage cream will please even the most discriminating clients.



TE-C6 (8 oz. Refillable Tube and Clip) . . . . .	<b>\$12.50</b>
TE-C4 (half gallon) . . . . .	<b>\$45.95</b>
TE-C3 (gallon) . . . . .	<b>\$71.95</b>

### Vegan Massage Lotion

Provides excellent absorption while retaining great glide and workability. It is rich in organic polyunsaturated oils and organic botanical extracts for a calming, therapeutic experience for the client. Unscented, hypo-allergenic and vegan, our massage lotion will please all clients.



TE-L9 (8 oz.) . . . . .	<b>\$9.50</b>
TE-L9HG (half gallon) . . . . .	<b>\$36.95</b>
TE-L9G (gallon) . . . . .	<b>\$56.95</b>

### Organic Massage Oil

Handcrafted with only the finest USDA Certified Organic oils. The massage oil blend is light, glides easily over the surface yet provides enough drag to be excellent for deep tissue work. Very concentrated, a small amount of this oil will provide several minutes of workability, and your clients will leave the table feeling like their skin has been moisturized without feeling greasy.



TE-MB008 (8 oz.) . . . . .	<b>\$11.50</b>
TE-MB064 (half gallon) . . . . .	<b>\$45.95</b>
TE-MB128 (gallon) . . . . .	<b>\$68.95</b>

### Organic Massage Gel

Get the best of both worlds with this USDA certified organic massage gel. It has the glide and purity of an oil with the grip and control of a cream. With no preservatives and only certified organic ingredients, the Organic Massage Gel is the purest choice for you, your clients and the earth.



GEL008 (8 oz.) . . . . .	<b>\$12.95</b>
GEL064 (half gallon) . . . . .	<b>\$47.95</b>
GEL128 (gallon) . . . . .	<b>\$73.95</b>



### Warming Massage Lotion

Uses organic cinnamon oil and organic menthol crystals to create a gentle heating sensation, soothing achy muscles and helping to facilitate blood flow.

TE-L20 (8 oz.) . . . . .	<b>\$15.50</b>
TE-L22 (half gallon) . . . . .	<b>\$67.00</b>



### Peppermint Foot Cream

Formulated to bring relief to sore, cracked and achy feet and legs by increasing blood flow and promoting healing using a custom blend of organic essential oils and extracts.

TE-C20 (8 oz.) . . . . .	<b>\$17.50</b>
TE-C22 (half gallon) . . . . .	<b>\$72.00</b>



# SELF CARE BODY TOOLS & INJURY PREVENTION

ReSell Program Available. Call 800-627-2387 for details.

**CUSTOM CRAFTWORKS**  
A Brand Of Pivotal Health Solutions

## PRESSURE POSITIVE THERAPEUTIC EVA FOAM ROLLER®

Foam rollers temporarily relieve tension, stretch out sore muscles and provide therapeutic self-massage using your body weight as the compressive force.



Foam Roller **Foam13** . . . **\$24.95**

## BACKNOBBER II® BY PRESSURE POSITIVE

The Original Backnobber II® is our best-selling deep-muscle massage tool, ideal for self-care. Or, for use with professional medical management and therapy for physical and occupational stress, injuries or chronic conditions such as arthritis or bursitis. Includes a free 35-page user's guide filled with stretches, techniques and routines.

Backnobber II® **B2** . . . . . **\$29.95**



## THE ORIGINAL PALMASSAGER®

One of the most efficient massage therapy aids available. Hold it firmly in the palm of the hand and use one, two or three of its round knobs to massage sore muscles.



**PALM** . . . . . **\$8.95**

## THE ORIGINAL INDEX KNOBBER II®

A simple device designed to let you apply deep pressure to muscles within easy reach of your hand. The ideal instrument for clinic or home use allowing for firm, sustained pressure on targeted muscles.



Index Knobber II® **IK2** . . . . . **\$8.95**

Wood Index Knobber II® (w/ball) **IK-Ball** . . . **\$8.95**

## THE ORIGINAL KNOBBLE II®

The new design of the all-wood favorite. Made of durable polymer with a band of non-latex Santoprene, The Knobble II® gives your hand more power when you need it.



Knobble II® **K2** . . . . . **\$8.95**

Wood Knobble II® **K** . . . . . **\$15.95**



## THE ORIGINAL VIBRASSAGER®

This innovative rolling massager is equipped with two knobby wheels that actually feel like they vibrate as they roll across the back, giving a delightful, relaxing massage.

**VIBRA** . . . . . **\$15.95**

## THE ORIGINAL ORBIT MASSAGER®

The Orbit Massager® allows you to provide a stress-releasing massage to the back, neck, shoulders and muscles throughout the body.



**ORBIT** . . . . . **\$21.95**

## THE ORIGINAL JACKNOBBER II®

An elegantly designed hand-held massage tool that can be used to provide a more pleasant and relaxing massage.



**J2** . . . . . **\$8.95**

## THE ORIGINAL BACKNOBBER®

The Original Backnobber® has been a favorite of therapists since its launch more than 20 years ago. Comfortably sized for most adults, the self-care tool hooks over a shoulder or under the arm to apply deep, firm pressure to knots and trigger points to relieve muscle tension in the neck, shoulder, upper and lower back, gluteals and more.

Regular Size **B** . . . . . **\$34.95**

Big Bend Size **BBB** . . . . . **\$37.95**



## FMST TOOLS

FMST Tools are the soft tissue mobilization tools that can take myo-fascial manipulation and mobilization to the next level. The design of the 2 tools enables you to work over all surfaces of the body quickly and easily.

**FMST TOOLS** . . . . . **\$617**



800.627.2387





# Signature

## SPA SERIES

by CUSTOM CRAFTWORKS



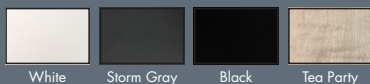
## TROLLEY CARTS

The Signature Spa Series Trolley Carts offer attractive storage for your towel warmers, towels, and other treatment essentials. Offered in three configurations, the Trolley Carts are available in laminate and wood. Customize your wood cart by adding a custom stain color. Each cart comes standard with an open shelf, a 2" hole with grommet for cords and 2" locking swivel casters.



**T100** in Storm Gray  
Towel warmer sold separately.

### Laminate Color Choices:



### Wood Color Choices:



See website for complete product details.



**T100**  
**Trolley Cart**  
Starting at **\$428**

Dimensions:  
20"W x 20"D x  
33"H



**T200**  
**Trolley Cart**  
Starting at **\$567**

Dimensions:  
20"W x 20"D x  
40"H



**T300**  
**Trolley Cart**  
Starting at **\$622**

Dimensions:  
20"W x 20"D x  
40"H

# AURA STATIONARY SERIES



**\$619**  
I9337

## AURA BASIC

Looking for a basic stationary massage table with all the features you need? The Aura Basic Table delivers. Its classic design includes a solid beech frame, easy-to-access storage shelf, adjustable height (24 - 33 inches), rounded corners for ease of movement and 3.5 inch thick multi-layered foam. Some assembly required. Front arm sling, face rest and pillow included.

### Table Specifications:

- Load Rating: 550 lbs
- Width: 30"
- Length: 76" (includes head rest)
- Height Range: 24" - 33"

### Table Features:

- 3.5" Multi-Layered Foam
- Dual-End Face Rest Ports
- Solid Beech Frame
- Open Storage Shelf
- Rounded Corners
- Interlocking Legs
- 8" on center Face Rest Ports

### AURA SERIES UPHOLSTERY CHOICES



Provide the  
ultimate in quality  
**without compromise**



**\$719**  
I9338

## AURA LIFT BACK

Give your clients extra ease with the Aura Lift Back Stationary Massage Table, which adds the flexibility of a multiple-position, hydraulic-spring elevating back that goes to 70 degrees. It also combines the multiple features of our basic table with removable side arms, a salon neck support pillow and classic adjustable head rest. Some assembly required. Includes foot extension and front arm sling.



**\$819**  
I9339

## AURA DELUXE

Exclusive spas and clinics trust our Aura Deluxe Stationary Massage Table to provide incredible client comfort. Tailored as a high-end clinic or spa solution, this table features a manual hydraulic lift spring adjustment for both back and knee sections for easy and accurate positioning. The Deluxe Table comes with removable side arms, a salon neck support pillow and classic adjustable head rest. Some assembly required. Includes foot extension and front arm sling.

**Portable!**



**\$319**  
I9302

Solutions Series Destiny Lift Back Table pg. 3



# HANDS FREE ELECTRIC TABLES

SIGNATURE SPA SERIES

## Hands Free Basic

TThera-P-3007-SS

\$2,986

Table Includes:

- 9" Deluxe Adjustable Face Rest and Cushion

SIGNATURE SPA SERIES

## Hands Free Lift Back

TThera-P-3007-SS

\$3,295

Table Includes:

- 9" Deluxe Adjustable Face Rest and Cushion
- Side arm holes - head end
- Swivel side arm supports

SIGNATURE SPA SERIES

## Hands Free Deluxe

STThera-P-3007-SS

\$3,707

Table Includes:

- 9" Deluxe Adjustable Face Rest and Cushion
- Salon head support and neck pillow
- Side arm holes - head end
- Swivel side arm supports

The elegant design of our Signature Spa Series Hands Free Electric Tables is ideal for spas or practices where style is as important as function. The custom gray base and design plates offer a sleek alternative to our classic base. The elegant foot bars along each side allow therapists to move freely around the table for a more fluid client experience. This series features our most desirable upgrades: Deluxe Adjustable Face Rest Base and Natural Touch Urethane upholstery in an exciting new color palette. With a 650 lb. lift capacity, our Signature Spa Series Hands Free Tables prove you really can have it all!

### Table Specifications:

- Lifting Capacity: 650 lbs.
- Hands free dual footbar control
- 73" L x 30" W
- Height range is 17-35"

### Table Features:

- Whisper quiet lift system
- Flat, Lift Back or Deluxe cushion with 3" deluxe wrap foam system and rounded corners
- Dual-end face rest ports
- 9" deluxe adjustable face rest and pillow
- Natural Touch urethane upholstery on table cushion and crescent pillow
- Steel base with classic gray powder coat



Table is ADA compliant  
(Consult your tax professional about eligibility for a Section 44 ADA Tax Credit)

See website for complete product details.

### Natural Touch Upholstery Color Choices:



[www.CustomCraftworks.com](http://www.CustomCraftworks.com)



## E100 Deluxe Electric Spa Table

E100-D-I9394



\$3,599

The E100 Deluxe Electric Spa Table is the first choice among five-star resorts and spas for its state-of-the-art features including a fully adjustable electric salon cushion with 3.5" foam, rounded corners, removable flexible armrests and a large cabinet with sliding doors for storage.

### Table Specifications:

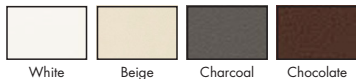
- Height range is 28-34"
- Width: 30"
- 8" on center face rest ports
- Length: 72.5"
- Load Rating: 650 lbs.

### Table Includes:

- Salon pillow
- Removable flexible armrests

### Table Features:

- Beech wood frame with walnut stain
- Large storage cabinet with sliding doors, accessible from both sides
- Adjustable feet for stability
- Electric height adjustment controlled by both hand and foot
- Fully electric salon cushion with hand control
- 8" on center Dual-end face rest ports
- 3.5" Thick multi-layer foam system
- Rounded corners
- Solutions upholstery in on-trend color choices



800.627.2387

## M100 Basic Table

M100-B



\$3,085



\$3,291

## M100 Lift Back Spa Table

M100-LB

## M100 Deluxe Spa Table

M100-D



\$3,600

The M100 Series is our custom spa table series built to provide ultimate client comfort and quality to any spa. A discreet toggle switch raises or lowers the beautiful maple or oak wood base with two large storage cabinets to the perfect height for your needs. Manual Assist Back (Lift Back) or Back and Knee (Deluxe) make adjusting easy. Choose a Basic, Lift Back or Deluxe Top.

### Table Specifications:

- Height range is 27-34"
- Width: 28" or 30"
- 9" on center face rest ports
- Length: 73"
- Load Rating: 550 lbs.

### Table Includes:

- Dual action face rest base
- Crescent Pillow (Basic and Lift Back)
- Side arm holes - head end (Lift Back and Deluxe)
- Salon head support and neck pills (Deluxe)
- Swivel side arm supports (Deluxe)

### Table Features:

- Maple or Oak construction
- Large 2 section storage cabinet with an adjustable shelf in each section
- 4 Left-Side Flat Panel Doors
- Electric height adjustment controlled by left side toggle switch Manual assist lift back and knee section
- Dual-end 9" on center face rest ports
- 3" Thick multi-layer foam system

### CUSTOM CRAFTWORKS UPHOLSTERY CHOICES



### UPHOLSTERY UPGRADE NATURAL TOUCH CHOICES



### Table Options:

- 33" wide table
- Breast recesses
- Rounded corners
- Holes for Side Arm Extensions - Head End
- Upgrade to Natural Touch Urethane Upholstery (face rest pillow included)
- Upgrade to Natural Touch Urethane Upholstery & Touch Response Memory Foam System (face rest pillow included)
- Raised panel doors
- Shaker style doors
- Frosted glass doors
- Custom wood stain color
- 230 Volt plug

# SPA ACCESSORIES



## Terry Cotton Face/Wash Towels (6 Pack)

Towel wash

Face/Wash Towel: 12"W x 12"L

\$19.99

## Terry Cotton Hand Towels (6 Pack)

Towel hand

Hand Towel: 16"W x 30"L

\$34.50

### TERRY COTTON TOWELS:

- 100% high quality ring spun cotton
- 600 GSM

Available in: White and Natural



Wisteria



Ocean



Creekside



Willow



Moab

\$48.00

## Spa Linen Theme Sets

Theme Set

### SPA LINEN THEME SET:

Set includes a flannel flat sheet, flannel fitted sheet, flannel face rest cover and polar fleece blanket



## Microfiber Massage Table Skirt

MTS30

\$35.95

TABLE SKIRT: • 125 GSM

- Lightweight and stain resistant
- Fits standard size stationary and portable tables

Available in: Walnut and Mirage Gray



## Massage Oil and Lotion Warmer

19398

\$51.00

- On/Off switch and automatic temperature control
- Only takes 20 minutes to reach constant temperature of 140° F
- White, high quality HDPE plastic bottle included

# TOWEL WARMERS

Our Towel Warmers have a rust-proof aluminum interior that maintains an internal temperature of 158-176 degrees Fahrenheit. The warmer comes with a condensation collector tray to remove excess moisture. The silicon door seal is ideal for heat retention and quiet operation.



## Single Door Towel Warmer

19346

\$175

Outside Dimensions:  
18"W x 12"D x 14"H

Inside Dimensions:  
15"W x 8"D x 10"H



## Double Door Towel Warmer

19347

\$225

Outside Dimensions:  
16.25"W x 17.5"D x 18"H

Inside Dimensions:  
(2) 13"W x 12.5"D  
x 5.75"H sections



Towels sold separately.

# VALUABLE EDUCATION

- E-books/Infographics
- Webinars
- Informational Blogs
- Product Spotlights

[www.CustomCraftworks.com](http://www.CustomCraftworks.com)



**Why Use Massage  
Therapy?  
E-book & Infographic**  
Steve Jurch, MA, ATC, LMT



**WEBINAR: Using  
Medical Massage  
with Laser to  
Improve Athletic  
Performance**  
Speaker: Curtis Turchin, DC



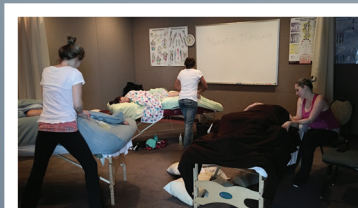
**BLOG:  
Choosing the  
best face rest**



**BLOG:  
Choosing  
your  
first table**



"We have several Custom Craftworks massage tables in our school that get used daily. They are set up and down continuously and raised and lowered depending on the student. To say the least, these tables have endured magnificently!"



- Lydia Benson  
Director of American  
Institute of Clinical  
Massage

## INTERESTED IN A SCHOOL PROGRAM?

Price and service are not all we have to offer you at Custom Craftworks. Our tables have an excellent reputation for being among the highest quality tables in the industry.

**Our massage tables and chairs are  
a choice that you and your students  
will feel good about.**





Our physical address:  
800 48th Street - Suite B  
Springfield, OR 97478

Our mailing address:  
5729 Main Street #238  
Springfield, OR 97478

**800-627-2387**

**[www.CustomCraftworks.com](http://www.CustomCraftworks.com)**

2018-2019 CATALOG



**Heritage Table**

## Need a Solution? We have the answer.

Our ***Solutions Series*** Portable massage tables and chairs are in stock and ready to ship. These beautifully crafted and rigorously tested tables each have been designed to provide for the practitioners' needs and maximum client comfort.



Destiny Lift  
Back Table



Melody  
Massage Chair



Luxor Table



800-627-2387 • [sales@customcraftworks.com](mailto:sales@customcraftworks.com) • [www.CustomCraftworks.com](http://www.CustomCraftworks.com)